

CMI Brass Audition - Treble Clef

♩ = 96-120

1



♩ = 76-92

2



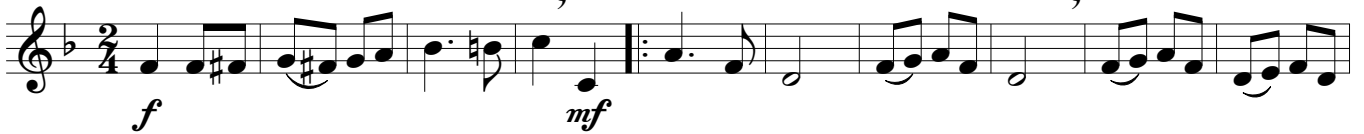
♩ = 80-100

3



♩ = 72-88

4



♩ = 84-120

5



CMI Brass Audition - Treble Clef

♩ = 76-92

6

Musical notation for exercise 6, consisting of two staves. The first staff begins with a treble clef, a 3/8 time signature, and a dynamic marking of *mf*. The melody consists of eighth and sixteenth notes. The second staff continues the melody and ends with a repeat sign.

♩ = 80-100

7

Musical notation for exercise 7, consisting of one staff. It begins with a treble clef, a key signature of one sharp (F#), and a 4/4 time signature. The melody is composed of quarter and eighth notes.

♩ = 92-112

8

Musical notation for exercise 8, consisting of two staves. It begins with a treble clef and a common time signature. The melody features dotted rhythms and accents (^) over various notes.

♩ = 72-88

9

Musical notation for exercise 9, consisting of three staves. It begins with a treble clef and a 4/4 time signature. The first staff includes dynamic markings of *p*, *cresc.*, and *p*, along with triplet markings (3). The second staff includes *p dolce* and *p* markings. The third staff includes *p*, *cresc.*, *rit.*, and *espress.* markings, along with triplet markings (3).

CMI Brass Audition - Treble Clef

10

$\text{♩} = 96-120$

f

11

$\text{♩} = 88-112$

mp

12

$\text{♩} = 80-100$

mp

CMI Brass Audition - Treble Clef

13

$\text{♩} = 88-112$

mf

Exercise 13: Five staves of music in 4/4 time, treble clef, key signature of one sharp (F#). The tempo is marked as quarter note = 88-112. The first staff starts with a mezzo-forte (*mf*) dynamic. The exercise consists of a series of eighth-note patterns across five staves, with the final note of each staff being a whole note. The patterns are: Staff 1: C4, D4, E4, F#4, G4, A4, B4, C5. Staff 2: C4, D4, E4, F#4, G4, A4, B4, C5. Staff 3: C4, D4, E4, F#4, G4, A4, B4, C5. Staff 4: C4, D4, E4, F#4, G4, A4, B4, C5. Staff 5: C4, D4, E4, F#4, G4, A4, B4, C5.

14

$\text{♩} = 66-80$

Exercise 14: Four staves of music in 4/4 time, treble clef, key signature of two flats (Bb, Eb). The tempo is marked as quarter note = 66-80. The exercise consists of eighth-note patterns across four staves, with the final note of each staff being a whole note. The patterns are: Staff 1: C4, D4, Eb4, F4, G4, Ab4, Bb4, C5. Staff 2: C4, D4, Eb4, F4, G4, Ab4, Bb4, C5. Staff 3: C4, D4, Eb4, F4, G4, Ab4, Bb4, C5. Staff 4: C4, D4, Eb4, F4, G4, Ab4, Bb4, C5.